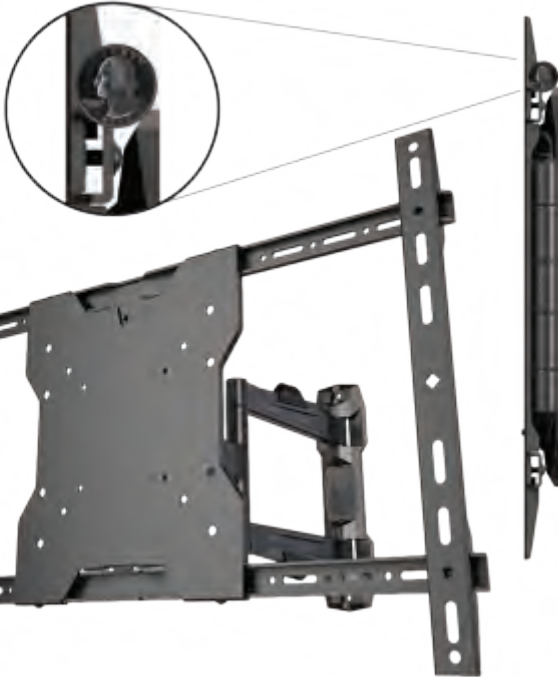




AU65

World's Thinnest Arm
only 1.09" from wall

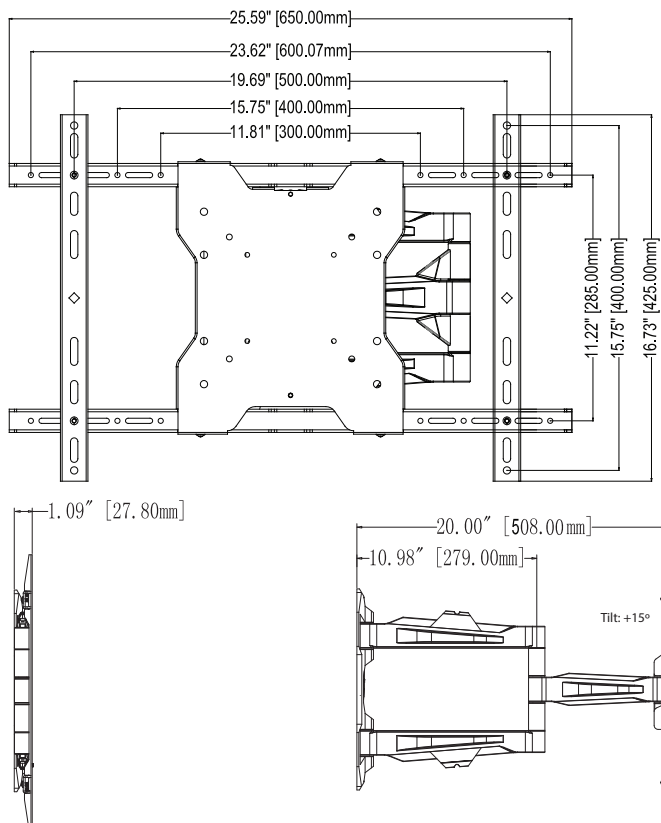


Decorative covers
hide screw heads



3 Attachment points and
a built in level

Model	TV Sizes	Max Mounting Pattern (WxH)	Load Rating
AU65	30"-65"	600x400mm	80lb



■ Installation

Comes pre-assembled for quick and easy installation. Features a built in level, decorative screw head covers and an easily adjustable tilt mechanism.

■ Installation Surfaces

Installs on single wood stud or masonry surfaces as well as metal studs (HT3 toggle bolt pack required).

■ Tilt

Pre-tensioned smooth functioning tilt mechanism allows +15° of adjustment without the need to continuously readjust a tension knob or screw.

■ VESA Compatible Universal Design

Compatible with all VESA patterns to 600x400mm. Maximum universal mounting pattern 600x400mm.

■ Construction

Fabricated from high-grade aluminum and cold rolled steel with durable epoxy powder coat finish. Includes a complete array of high-grade fasteners, in a pre-sorted hardware pack for easy selection.